



# PRODUCT GUIDE



**Griddles • Charbroilers • Hot Plates**  
**Fryers • Panini / Sandwich 2-Sided Grills**  
**Contact & Conveyor Toasters • Conveyor Ovens**  
**Tortilla Warmers • Drawer Warmers • Roller Grills**  
**Hot Dog & Concession Equipment • Waffle Makers**

pricing effective  
**January 5, 2026**

Star-Holman-TM\_Product Guide\_2026\_v1

[Index](#)



# PRODUCT GUIDE

pricing effective  
**January 5, 2026**



**Griddles • Charbroilers • Hot Plates**  
**Fryers • Panini/Sandwich 2-Sided Grills**  
**Contact & Conveyor Toasters • Conveyor Ovens**  
**Tortilla Warmers • Drawer Warmers • Roller Grills**  
**Hot Dog & Concession Equipment • Waffle Makers**  
**Heated Peristaltic Dispensers**

## STAR, HOLMAN & TOASTMASTER

265 Hobson Street | Smithville, Tennessee 37166

### **CUSTOMER SERVICE**

phone: 800-264-7827 option 1  
email: [orders@starholdingsgrp.com](mailto:orders@starholdingsgrp.com)

### **TECHNICAL SERVICE**

phone: 800-264-7827 option 2  
email: [techservice@partstown.com](mailto:techservice@partstown.com)

PRICING SUBJECT TO CHANGE. ALWAYS CHECK AUTOQUOTES FOR LATEST PRICING PRIOR TO PLACING AN ORDER.  
ALL ORDERS SHIP FOB FACTORY (SMITHVILLE, TN)

[star-mfg.com](http://star-mfg.com)



facebook.com  
**StarMfgInc**



twitter.com  
**StarMfg**



Instagram.com  
**starmfg**



youtube.com  
**StarMfgVideos**



linkedin.com  
**star-manufacturing-international-inc**



Table of Contents





# TABLE OF CONTENTS

pricing effective  
July 1, 2025

## COUNTERTOP EQUIPMENT ..... pgs 6-22

Griddle Buying Guide .....	pg 7
Griddle Features Guide .....	pg 8
Griddles, Star Ultra-Max .....	pg 9
Griddles, Star Star-Max .....	pg 10
Griddles, Toastmaster .....	pg 11
Equipment Stands & Ultra-Max Plate Shelves .....	pg 12
Charbroiler Buying Guide .....	pg 13
Charbroiler Features Guide .....	pg 14
Charbroilers, Star Ultra-Max .....	pg 15
Charbroilers, Star Star-Max .....	pg 16
Charbroilers, Toastmaster .....	pg 17
Hot Plates, Star Ultra-Max .....	pg 18
Hot Plates, Star Star-Max .....	pg 19
Hot Plates, Toastmaster .....	pg 20
Fryers, Star Ultra-Max .....	pgs 21-22

## 2-SIDED SANDWICH/PANINI GRILLS ..... pgs 23-28

Sandwich/Panini Grill Buying Guide .....	pgs 24-25
Sandwich Grills, Star Pro-Max .....	pgs 26-27, 28
Sandwich Grills, Star Grill-Express .....	pg 27

## TOASTERS ..... pgs 29-35

Toasters Buying Guide .....	pg 30
Vertical Contact Toaster, Holman .....	pg 31
Horizontal Contact Toasters, Holman .....	pg 32
Compact Conveyor Toasters, Holman .....	pg 33
High-Volume Conveyor Toasters, Holman .....	pg 34
Specialty Conveyor Toasters, Holman .....	pg 35

## CONVEYOR OVENS ..... pgs 36-37

Impingement Conveyor Ovens, Star Ultra-Max .....	pg 36
Quartz Conveyor Ovens, Holman .....	pg 37

## WARMERS ..... pgs 38-37

Tortilla Warmers, Star .....	pg 38
Drawer Warmers, Toastmaster .....	pg 39

## HOT DOG EQUIPMENT ..... pgs 40-46

Roller Grill Buying Guide .....	pgs 41-42
Roller Grills, Star Grill-Max .....	pgs 43-44
Bun Boxes, Sneeze Guards & Accessories .....	pg 45
Cradle Broil-O-Dog & Hot Dog Steamers .....	pg 46

## Waffle Bakers - Traditional & Belgian, Star ..... pg 47

## Heated Peristaltic Dispensers, Star ..... pg 48

## INDEX ..... pg 49

## MAP/M.R.I.C.P. POLICY ..... pgs 50-51

## WARRANTY ..... pgs 52-54

## INFO ..... pg 55



# FREIGHT INFORMATION



## PREPAID FREIGHT

on orders of  
**\$20,000**  
or more total net \*

### Prepaid Freight offer will ONLY apply if:

1. Freight ships from Star warehouse location.
2. Freight for orders in continental United States only.
3. Star chooses freight carrier.
4. Star must pre-pay and add freight to invoice.

### Additional Charges

Lift Gate Delivery = \$150

Call Before Delivery = \$100

All other requests, call for pricing.

### Freight Classification

The bulk of Star commercial equipment is rated 85. Special configurations or non-standard crating may add to the classification. Rate classifications are subject to change without notice. All UPS Ground shipments on Star account will be subjected to a shipping and handling fee. We encourage customers to ship on their UPS Ground account to avoid charges.

### Freight Damage:

**DO NOT SIGN** for equipment until you have thoroughly inspected it for noticeable freight damage. If damages are identified, please indicate damaged item(s) on the delivery receipt.

**Noticeable Freight Damage** - If an order is delivered with noticeable damage, **DO NOT ACCEPT THE ITEM**, note damages on the delivery receipt and refuse delivery of damaged item(s). Contact Star Holdings Group immediately at [orders@starholdingsgrp.com](mailto:orders@starholdingsgrp.com) or call 800-264-7827. The consignee is responsible for notifying the factory of any damages. Please include your name, item(s) damaged, serial number (if applicable), description of damage, and photographs (if possible). Damaged shipments originating from a Star Holdings Group facility to the original consignee must be reported within 24 hours of delivery. Shipments originating from dealer stock which result in freight damage must be handled through the dealership.

**Concealed Freight Damage** - All items must be inspected immediately upon delivery for any signs of damage. If an item shows signs of damage upon opening, immediately contact Star Holdings Group at [orders@starholdingsgrp.com](mailto:orders@starholdingsgrp.com) or call 800-264-7827. The damage must be reported to Star Holdings Group up to 5-days from the date of delivery. Please include your name, item(s) damaged, serial number (if applicable), description of damage, and photographs (if possible). The damaged item needs to be photographed and all packing and box materials must be kept for inspection by the freight carrier. Damaged shipments originating from a Star Holdings Group facility to the original consignee must be reported up to 5-days of delivery. Shipments originating from dealer stock which result in freight damage must be handled through the dealership.



# 100 YEARS OF QUALITY

— est. 1921 —

# STAR



est. 1921





# COUNTERTOP COOKING EQUIPMENT

GRIDDLES • CHARBROILERS • HOT PLATES • FRYERS

Star and Toastmaster griddles, charbroilers, hot plates, and fryers are designed to stand up to the demands of constant use, high-volume operations, and repeated heat-up and cool-down cycles.

## Fryers

Star Star-Max

## Hot Plates

Star Ultra-Max  
Star Star-Max  
Toastmaster

## Griddles

Star Ultra-Max  
Star Star-Max  
Toastmaster

## Charbroilers

Star Ultra-Max  
Star Star-Max  
Toastmaster







# GRIDDLES

## HEAVY-DUTY GRIDDLE BUYING GUIDE



STAR-MAX 624



ULTRA-MAX 860MA

### Star Ultra-Max Griddles

Plate thickness **1"**  
 Plate depth **24"**  
 Plate width **24-72"**  
 BTU/foot (gas) **30,000**  
 kW/foot (elec) **4.35**  
 Embedded **Yes**

Thermostat (gas) **Mechanical Snap-Action**  
 Thermostat (electric) **Electric Snap-Action**  
 Set temperature **+/-15°F**  
 Chrome option **Yes**



### Star Star-Max Griddles

Plate thickness **1"**  
 Plate depth **20 1/2"**  
 Plate width **15-48"**  
 BTU/foot (gas) **28,300**  
 kW/foot (elec) **3.0 (208V) 4.0 (240V)**  
 Embedded **Yes**

Thermostat (gas) **Modulating**  
 Thermostat (electric) **Electric Snap-Action**  
 Set temperature **+/-30°F**  
 Chrome option **Yes**



### Toastmaster Griddles

Plate thickness **3/4"**  
 Plate depth **20 1/2"**  
 Plate width **24-48"**  
 BTU/foot (gas) **20,000**  
 kW/foot (elec) **3.0 (208V) 4.0 (240V)**  
 Embedded **No**

Thermostat (gas) **Modulating**  
 Thermostat (electric) **Electric Snap-Action**  
 Set temperature **+/-40°F**  
 Chrome option **No**



TM TMGM36



## GRIDDLE FEATURES

**1" & 3/4" THICK PLATES** Griddle plate thickness drives surface temperature, performance, and consistency. 1" thick griddle plates will retain more heat for faster recovery. 1" thick plates allow the thermostat probes to be mounted deep within the griddle plate, resulting in improved performance. Our heavy-duty 3/4" griddle plate models have bottom-mounted temperature probes

**PLATE DEPTH** Deeper griddle plates offer more cooking area and usable space. Balance specific production needs with size constraints in the kitchen. Different depths available on select model families



**CHROME SURFACE** In-addition to the exceptional mirror finish of chrome, our chrome plates don't require seasoning with oil, they clean up faster. Wait, there's more ... chrome notably reduces kitchen heat load, and chrome nearly eliminates flavor transfer!

**OPTIMAL PERFORMANCE + EASY CLEAN UP**

## GRIDDLE THERMOSTATS

### MECHANICAL SNAP-ACTION THERMOSTAT

MECHANICAL controls cycle the griddle burner completely ON-or-OFF as demanded by griddle surface temperature changes. Controls are heat, water and grease resistant, with no power required. Temperature control ranges from 150°F-550°F for embedded probes with a surface temperature control  $\pm 15^{\circ}\text{F}$  to set point



### ELECTRIC SNAP-ACTION THERMOSTAT

Electric powered controls cycle the burner completely ON-or-OFF as demanded by surface temperature changes. Temperature control ranges from 150°F-450°F for embedded probes with a surface temperature control  $\pm 15^{\circ}\text{F}$  to set point



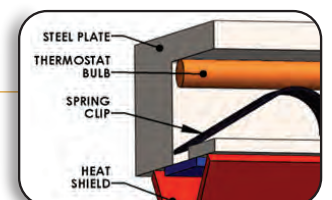
### MODULATING THERMOSTAT

MECHANICAL diaphragm and probe controls the burner. Controls are heat, water and grease resistant, and require no power. Temperature control ranges from 150°F-450°F for embedded probes with a surface temperature control  $\pm 30^{\circ}\text{F}$  to set point,  $\pm 40^{\circ}\text{F}$  for bottom mounted



### EMBEDDED THERMOSTAT

Embedded thermostat reacts more quickly to changes on the cooking surface providing better performance than probes on the bottom of the plate







# GRIDDLES



## ULTRA-MAX GRIDDLES

*UltraMax*



824MA



760TA



### STAR ULTRA-MAX GAS MANUAL & EMBEDDED SNAP-ACTION GRIDDLES

MANUAL		MECHANICAL Snap-Action Thermostat								
Series No.	Griddle Type: MA Polished Steel Plate	Griddle Type: TA Polished Steel Plate	Griddle Type: TCHSA CHROME Plate	BTU	Plate Depth [in.]	Width [in.]	Unit Depth [in.]	Height [in.]	Ship Wt. [lb.]	Freight Class
824	\$7,249	\$9,570	\$17,273	60,000	24	24	32.38	18.00	300	85
836	\$9,871	\$12,809	\$24,340	90,000	24	36	32.38	18.00	435	85
848	\$12,602	\$15,959	\$31,202	120,000	24	48	32.38	18.00	520	85
860	\$15,612	\$20,142	\$38,379	150,000	24	60	32.38	18.00	656	85
872	\$18,933	\$26,326	\$47,093	180,000	24	72	32.38	18.00	780	85
All prices F.O.B Smithville, TN			Specify Natural Gas or Propane and Elevation requirements when ordering							

Ultra-Max Plate Shelf options on page 12  
Stand options on page 12

### STAR ULTRA-MAX ELECTRIC EMBEDDED SNAP-ACTION GRIDDLES

#### ELECTRIC Snap-Action Thermostat

Series No.	Griddle Type: TA Polished Steel Plate	Griddle Type: TCHSA <sup>2</sup> Chrome Plate	Watts <sup>1</sup> 208V or 240V	Plate Depth [in.]	Width [in.]	Unit Depth [in.]	Height [in.]	Ship Wt. [lb.]	Freight Class
724	\$10,469	\$18,170	8,700	24	24	33.69	18.00	220	85
736	\$13,614	\$24,805	13,050	24	36	33.69	18.00	330	85
748	\$17,789	\$32,572	17,400	24	48	33.69	18.00	440	85
760	\$22,132	\$39,822	21,750	24	60	33.69	18.00	550	85
772	\$28,710	\$49,480	26,100	24	72	33.69	18.00	660	85
1 - Specify 208V or 240V service. All units must be hard-wired at installation for 1-phase or 3- phase service									
2 - TCHSA models - chrome only available in 240V for the 760TCHSA & 772TCHSA									

Ultra-Max Plate Shelf options on page 12  
Stand options on page 12

#### MODEL NAME FORMULA

MODEL NAME =

Series No. + Griddle Type

Series No.	Griddle Type: MA Polished Steel Plate	Griddle Type: TA Polished Steel Plate
824	<b>824MA</b>	<b>824TA</b>



836MA



# GRIDDLES



## STAR-MAX GRIDDLES

StarMax



636TF



### STAR-MAX MANUAL & EMBEDDED THERMOSTATIC GAS GRIDDLES

	MANUAL	EMBEDDED Modulating Thermostat		EMBEDDED Modulating Thermostat w/ Pilot Safety	
Series No.	Griddle Type: MF Polished Steel Plate	Griddle Type: TF Polished Steel Plate	Griddle Type: TCHSF CHROME Plate	Griddle Type: TSPF Polished Steel Plate	BTU <sup>1</sup>
615	\$3,164	\$4,216	-	-	28,300
624	\$3,821	\$6,171	\$10,858	\$7,576	56,600
636	\$4,808	\$7,874	\$14,931	\$9,569	84,900
648	\$6,484	\$10,216	\$19,634	\$12,185	113,200
All prices F.O.B Smithville, TN		1 - All units ship for Natural Gas service. Propane conversion kits included			



615TF

Stand options on page 12

### STAR-MAX SNAP-ACTION ELECTRIC GRIDDLES

Series No.	Griddle Type: TGF Polished Steel Plate	Griddle Type: CHSF CHROME Plate	Watts <sup>2</sup> 208V/240V
515	\$3,789	-	3,000/4,000
524	\$5,297	\$9,040	6,000/8,000
536	\$6,277	\$11,925	9,000/12,000
548	\$8,765	\$15,323	12,000/16,000
2 - 208/240V service for all models		All units must be hard-wired at installation for 1-phase & 3-phase service	



524TGF



Stand options on page 12

### STAR-MAX GRIDDLE SPECIFICATIONS

Series No.	Plate Depth [in.]	Width [in.]	Gas Unit Depth [in.]	Electric Unit Depth [in.]	Height [in.]	Ship Wt. [lb.]	Freight Class
615 / 515	20.5	15	29.00	27.88	15.5	126	85
624 / 524	20.5	24	29.00	27.88	15.5	186	85
636 / 536	20.5	36	29.00	27.88	15.5	250	85

### MODEL NAME FORMULA

MODEL NAME =  
Series No. + Griddle Type

Series No.	Griddle Type: TGF Polished Steel Plate
515	515TGF
524	524TGF





## TOASTMASTER GRIDDLES



### TOASTMASTER MANUAL & THERMOSTATIC GRIDDLES - GAS & ELECTRIC



TMGM36



MANUAL GAS			MODULATING GAS Thermostat		ELECTRIC Griddle w/ SNAP-ACTION Thermostat						
Series No.	Griddle Type: TMGM Polished Steel Plate	Griddle Type: TMGT Polished Steel Plate	BTU <sup>1</sup>	Griddle Type: TMGE Polished Steel Plate	Watts 208V/240V	Plate Depth [in.]	Width [in.]	Unit Depth [in.]	Height [in.]	Ship Wt. [lb.]	Freight Class
24	\$3,562	\$4,512	40,000	\$4,147	6,000/8,000	20.5	24	27.81	15.50	158	85
36	\$4,494	\$5,974	60,000	\$5,456	9,000/12,000	20.5	36	27.81	15.50	236	85
48	\$5,252	\$7,317	80,000	\$6,648	12,000/16,000	20.5	48	27.81	15.50	315	85
All prices F.O.B Smithville, TN											
1 - All gas units ship for Natural Gas service. Propane conversion kits included											
2 - All 208/240V units must be hard-wired at installation for 1-phase or 3-phase service											

[Stand options on page 12](#)

### MODEL NAME FORMULA

**MODEL NAME** = Griddle Type + Series No.

Series No.	Griddle Type: TMGM Polished Steel Plate	Griddle Type: TMGT Polished Steel Plate
24	<b>TMGM24</b>	<b>TMGT24</b>





## EQUIPMENT STANDS & ULTRA-MAX PLATE SHELVES

### HEAVY-DUTY EQUIPMENT STANDS with CASTERS

Model No.	Price F.O.B Smithville, TN	Width [in.]	Depth [in.]	Height [in.]	Ship Wt. [lb.]	Freight Class
STAND/HC-24	\$3,188	24.00	30.00	24.00	25	85
STAND/HC-36	\$3,572	36.00	30.00	24.00	68	85
STAND/HC-48	\$4,195	48.00	30.00	24.00	88	85
STAND/HC-60	\$4,903	60.00	30.00	24.00	105	85
STAND/HC-72	\$5,799	72.00	30.00	24.00	122	85

### 7-INCH PLATE SHELF for Ultra-Max Griddles/Charbroilers

Unit Size	Model No.	7" Plate Shelf	Ship Wt. [lb.]	Freight Class
24"	UMSA24	\$477	6	85
36"	UMSA36	\$649	9	85
48"	UMSA48	\$813	12	85
60"	UMSA60	\$1,114	13	85
72"	UMSA72	\$1,296	16	85

All prices F.O.B Smithville, TN



## CHARBROILER BUYING GUIDE

### RADIANT & LAVA ROCK MODELS



#### Star **Ultra-Max** Charbroilers Radiant & Lava Rock

Burner mat'l **Cast iron**  
Burners/foot **2**  
BTU/foot **40,000**  
Radiant mat'l **Steel alloy**  
Grate depth **25<sup>1</sup>/<sub>4</sub>"**

Unit width options  
**24", 36", 48", 60", 72"**

7" Shelf accessory available  
for Ultra-Max charbroilers



ULTRA-MAX  
8024CBB

#### Star **Star-Max** Charbroilers Radiant & Lava Rock

Burner mat'l **Cast iron**  
Burners/foot **1**  
BTU/foot (gas) **40,000**  
kW/foot (elec) **3.3**  
Radiant mat'l **Stainless steel**  
Grate depth **20<sup>3</sup>/<sub>10</sub>"**

Unit width options  
**15", 24", 36", 48"**



STAR-MAX 6136RCBF

#### Toastmaster **Charbroilers** Radiant & Lava Rock

Burner mat'l **Steel Tube**  
Burners/foot **1**  
BTU/foot **30,000**  
Radiant mat'l **Stainless steel**  
Grate depth **20<sup>3</sup>/<sub>10</sub>"**

Unit width options  
**24", 36", 48"**



TM TMRC24

## CHARBROILER FEATURES

### STEEL TUBE BURNER

Tubular steel burners offer excellent and reliable performance at an economical price. Available in Toastmaster charbroilers, models have one (1) burner per 12"



### CAST IRON GRATES

All Star and Toastmaster charbroilers come with heavy-duty cast iron grates. Incline or lay flat to optimize your cooking surface



### CAST IRON BURNER

Cast Iron burners are ten times heavier & thicker than sheet metal burners, cast iron burners offer performance and durability in the most corrosive kitchen environments.

- One (1) burner per 12" for Star-Max models
- Two (2) burners per 12' for Ultra-Max models

### RADIANT STYLE

Charbroiler radiants protect the burners from debris and they ensure a more uniform temperature profile. Star-Max and Toastmaster heavy gage sheet metal radiants can last for years, and the uniquely durable Lang and Ultra-Max steel alloy radiants may last the life of your charbroiler



### LAVA ROCK

Lava rocks function as a radiant for the entire burner array and diffuse the heat generated by the burners effectively. Cooking surface temperature profiles can be modified by positioning the rock, and flavor profiles may vary depending on use



ULTRA-MAX





## ULTRA-MAX CHARBROILERS

*UltraMax*



ULTRA-MAX 8148RCBB

### STAR ULTRA-MAX RADIANT & LAVA ROCK GAS CHARBROILERS

RADIANT CHARBROILERS		LAVA ROCK CHARBROILERS		BTU¹	Grate Depth [in.]	Width [in.]	Unit Depth [in.]	Height [in.]	Ship Wt. [lb.]	Freight Class
8124RCBB	\$9,756	8024CBB	\$10,243	80,000	24	24	30.63	18.00	260	85
8136RCBB	\$13,260	8036CBB	\$13,923	120,000	24	36	30.63	18.00	350	85
8148RCBB	\$17,041	8048CBB	\$17,891	160,000	24	48	30.63	18.00	438	85
8160RCBB	\$21,290	8060CBB	\$22,355	200,000	24	60	30.63	18.00	543	85
8172RCBB	\$23,679	8072CBB	\$24,863	240,000	24	72	30.63	18.00	665	85
All prices F.O.B Smithville, TN				1 - Specify Natural Gas or Propane when ordering.						
High elevation construction available at no charge. Specify when ordering.										

Ultra-Max Plate Shelf options on page 12  
Stand options on page 12



ULTRA-MAX 8136RCBB





# CHARBROILERS



## STAR-MAX CHARBROILERS

*StarMax*



STAR-MAX 6136RCBF



### STAR-MAX RADIANT & LAVA ROCK GAS CHARBROILERS

RADIANT CHARBROILERS		LAVA ROCK CHARBROILERS		BTU <sup>1</sup>	Grate Depth [in.]	Width [in.]	Depth [in.]	Height [in.]	Ship Wt. [lb.]	Freight Class
6115RCBF	\$3,423	6015CBF	\$3,595	40,000	21	15	25.75	15.50	121	85
6124RCBF	\$4,000	6024CBF	\$4,107	80,000	21	24	25.75	15.50	186	85
6136RCBF	\$5,601	6036CBF	\$5,751	120,000	21	36	25.75	15.50	290	85
6148RCBF	\$7,731	6048CBF	\$7,942	160,000	21	48	25.75	15.50	350	85
All prices F.O.B Smithville, TN				1 - All units ship for Natural Gas service. Propane conversion kits included						

[Stand options on page 12](#)

### STAR-MAX RADIANT ELECTRIC CHARBROILERS



STAR-MAX 5124CF

Model	Prices F.O.B Smithville, TN	Volts	Watts <sup>2</sup>	Grate Depth [in.]	Width [in.]	Depth [in.]	Height [in.]	Ship Wt. [lb.]	Freight Class
5124CF	\$8,256	208 240	6,600	21	24	25.63	14.25	129	85
5136CF	\$11,191	208 240	9,900	21	36	25.63	14.25	186	85
2 - Specify 208V or 240V				All units must be hard-wired at installation 1-phase or 3-phase service					

[Stand options on page 12](#)



# CHARBROILERS



## TOASTMASTER CHARBROILERS



TM TMLC36



### TOASTMASTER RADIANT & LAVA ROCK GAS CHARBROILERS



RADIANT CHARBROILERS		LAVA ROCK CHARBROILERS		BTU <sup>1</sup>	Grate Depth [in.]	Width [in.]	Depth [in.]	Height [in.]	Ship Wt. [lb.]	Freight Class
TMRC24	\$3,325	TMLC24	\$3,325	60,000	21	24	25.75	15.50	186	85
TMRC36	\$4,275	TMLC36	\$4,275	90,000	21	36	25.75	15.50	290	85
TMRC48	\$5,438	TMLC48	\$5,438	120,000	21	48	25.75	15.50	350	85
All prices F.O.B Smithville, TN				1 - All units ship for Natural Gas service. Propane conversion kits included						

[Stand options on page 12](#)



TM TMRC24



TM TMLC48



## ULTRA-MAX HOT PLATES

*UltraMax*



804HA



806HA



### STAR ULTRA-MAX GAS HOT PLATES

Ultra-Max Hot Plates feature 30,000 BTU cast iron burners and heavy-duty cast iron grates



Model No.	Price F.O.B. Smithville, TN	No. Burners	BTU <sup>1</sup>	Width [in.]	Depth [in.]	Height [in.]	Ship Wt. [lb.]	Freight Class
802HA	\$3,677	2	60,000	12	30.63	14.88	108	85
804HA	\$5,475	4	120,000	24	30.63	14.88	194	85
806HA	\$7,214	6	180,000	36	30.63	14.88	219	85
808HA	\$9,180	8	240,000	48	30.63	14.88	283	85

1 - Specify Natural Gas or Propane and Elevation requirements when ordering. No extra charge.

Ultra-Max Plate Shelf options on page 12  
Stand options on page 12



802HA



806HA





# HOT PLATES



## STAR-MAX HOT PLATES



STAR-MAX 602HWF

STAR-MAX 604HF



### STAR-MAX GAS HOT PLATES

Star-Max Hot Plates feature 25,000 BTU  
cast iron burners and heavy-duty cast iron grates



Model No.	Price F.O.B Smithville, TN	No. Burners	BTU <sup>1</sup>	Width [in.]	Depth [in.]	Height [in.]	Ship Wt. [lb.]	Freight Class
602HF	\$2,646	2	50,000	12.19	28.88	11.94	75	85
604HF	\$4,099	4	100,000	24.19	28.88	11.94	125	85
606HF	\$5,691	6	150,000	36.19	28.88	11.94	200	85
<b>SIDE-BY-SIDE GAS HOTPLATE</b>								
602HWF	\$2,646	6	50,000	24.19	17.00	11.94	75	85
All units ship for natural gas service. Propane conversion kits included					* Stockpot in LP service operates at 90,000 BTU			



Stand options on page 12

STAR-MAX 602HWF



### STAR-MAX ELECTRIC HOT PLATES - SOLID FRENCH TOP

Model No.	Price F.O.B Smithville, TN	No. Burners	Watts <sup>1</sup> 208/240V	Width [in.]	Depth [in.]	Height [in.]	Ship Wt. [lb.]	Freight Class
501FF	\$1,964	1	1,950/2,600	12.00	17.25	10.28	25	85
502FF	\$2,774	2	3,900/5,200	12.00	28.00	11.68	45	85
1 - All units are built for 208/240 volt, 1-phase service								

Star-Max Electric Hot Plates feature  
high-power French-top burners



STAR-MAX 501FF



# HOT PLATES



## TOASTMASTER HOT PLATES



### TOASTMASTER GAS HOT PLATES



TMHP2

TMHP4



Model No.	Price F.O.B Smithville, TN	No. Burners	BTU <sup>1</sup>	Width [in.]	Depth [in.]	Height [in.]	Ship Wt. [lb.]	Freight Class
TMHP2	\$2,680	2	44,000	12.19	28.88	11.94	75	85
TMHP4	\$4,233	4	88,000	24.19	28.88	11.94	125	85
TMHP6	\$5,948	6	132,000	36.19	28.88	11.94	200	85

1 - All units ship for Natural Gas service. Propane conversion kits included

[Stand options on page 12](#)



### TOASTMASTER ELECTRIC HOT PLATES - SOLID FRENCH TOP

Model No.	Price F.O.B Smithville, TN	No. Burners	Watts <sup>1</sup> 208/240V	Width [in.]	Depth [in.]	Height [in.]	Ship Wt. [lb.]	Freight Class
TMHPF	\$2,700	2	3,900/5,200	12.19	28.88	11.94	45	85

1 - All units are built for 208/240 volt, 1-phase service



TMHPF





# FRYERS



## STAR-MAX FRYERS

### STAR-MAX GAS FRYERS



Model No.	Price F.O.B Smithville, TN	Oil Capacity [lb.]	Fries per hour [lb.]	BTU <sup>2</sup>	Description	Width [in.]	Depth [in.]	Height [in.]	Ship Wt. [lb.]	Freight Class
<b>SINGLE POT, TWIN BASKETS</b>										
615FF	\$7,393	15	28	30,000	UNDER FIRED TWIN BASKETS	12.00	25.13	24.63	74	85
630FF	\$9,096	30	68	70,000	UNDER FIRED FULL BASKETS	24.00	25.13	24.63	140	85
Specify Natural Gas or Propane when ordering					2 - 630FF in LP service operates at 65,000 BTU					

Fryer accessories on next page (pg. 22)

Stand options on page 12

### STAR-MAX ELECTRIC FRYERS

Model No.	Price F.O.B Smithville, TN	Oil Capacity [lb.]	Fries per hour [lb.]	Volts <sup>1</sup>	Watts	NEMA Plug	Width [in.]	Depth [in.]	Height [in.]	Ship Wt. [lb.]	Freight Class
SINGLE POT, TWIN BASKETS											
514LL	\$3,001	14	15	120	1,800	5-15P	11.00	21.88	13.25	34	85
301HLF	\$4,265	15	28	208/240	4,130/5,300	6-30P	18.00	20.00	17.00	50	85
515F	\$4,122	15	32	208/240	4,319/5,750	6-30P	12.00	24.00	16.75	47	85
530FF	\$6,881	30	65	208/240	8,460/11,500	Field Wired	24.00	24.00	16.50	80	85
TWIN POT, SINGLE BASKET											
530TF	\$7,202	30	64	208/240	8,638/11,500	Field Wired	24.00	24.00	16.75	80	85

Fryer accessories on next page (pg. 22)







## STAR-MAX FRYER ACCESSORIES

### STAR-MAX FRYER ACCESSORIES

Model No.	Price F.O.B Smithville, TN	Description	Ship Wt. [lb.]	Freight Class
514FB	\$214	BASKET for 514LL	4	85
301FBL	\$381	TWIN BASKET (Left Hand) for 301HLF	4	85
301FBR	\$381	TWIN BASKET (Right Hand) for 301HLF	4	85
530TBL	\$479	TWIN BASKET (Left Hand) for 515F, 530TF & 615FF	4	85
530TBR	\$479	TWIN BASKET (Right Hand) for 515F, 530TF & 615FF	4	85



514LL





# 2-SIDED GRILLS PANINI SANDWICH

GROOVED & SMOOTH OPTIONS  
ALUMINUM & CAST IRON PLATENS

## THE HOTTEST 2-SIDED GRILL IN THE INDUSTRY

Star Panini Sandwich grills feature more production per hour than any other grill due to faster heat recovery.

Star Sandwich grills unique “ANYWHERE COOKING TECHNOLOGY” boasts even temperatures across the grill.

This innovative feature means consistent, full-surface heat allowing you to cook anywhere on the grill surface for maximum performance and output

**GREAT RECIPES,  
VIDEOS & MORE!**  
**STAR-MFG.COM**



click for  
Pro-Max  
recipes



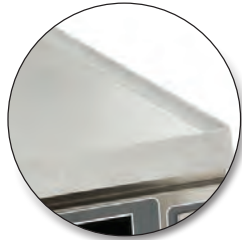
[star-mfg.com/product/pro-max-panini-grills-with-torsion-spring-hinge/](http://star-mfg.com/product/pro-max-panini-grills-with-torsion-spring-hinge/)





## SANDWICH/PANINI GRILL BUYING GUIDE

### PLATENS



### ALUMINUM **vs.** CAST IRON

#### ALUMINUM & CAST IRON **WILL PERFORM DIFFERENTLY**

- Aluminum will distribute heat more evenly, but lose heat faster and require more cycling
- Cast Iron requires more power to heat (due to higher density), but can retain temperature better for faster recovery in appropriate applications
- Both materials clean about the same, and though all iron products can rust, simple oiling and seasoning will prevent



#### CRITERIA THAT FAVOR ALUMINUM

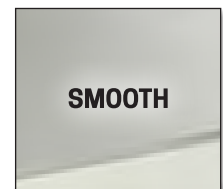
- Warming (tortillas, quesadillas, mild re-therm)
- Heating/Marking Bread products
- Low power available (120V, 1700W maximum)
- Split-Top (Aluminum only)

#### CRITERIA THAT FAVOR CAST IRON

- Cooking applications (chicken, burgers etc...)
- Hybrid uses (protein breakfasts, quesadilla lunches)
- High power available (208/240V, up to 7200W)
- 28" unit (Cast Iron only)

### GROOVED **vs.** SMOOTH

- A menu decision based on the look/feel of the finished product
- 'Panini' sandwiches are marked with grooves, by definition
- Less surface contact from grooves may increase cook times



**Alternative:** Smooth Bottom, Grooved Top - the best of both worlds!

## FLAT LANDING for OPTIMAL HEATING

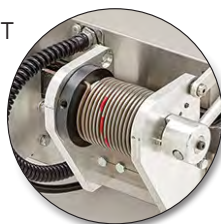
### 3-INCH 'FLAT LANDING' OPENING for LARGE SANDWICHES (PST models only)

- Perfect contact front-to-back for optimal heating
- Prevents contents from being squeezed out

### HINGE TYPES

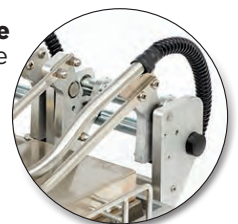
Our exclusive **Torsion Spring Hinge** STAYS PUT at whatever position you leave it, and has been tested to over 4 MILLION cycles, so you can count on it day-after-day, year-after-year!

**TORSION  
SPRING  
HINGE**



Our **Counter-Balance Hinge**  
The Counter-Balance Hinge mechanism is constructed from hardened aluminum

**COUNTER  
BALANCE  
HINGE**







## SANDWICH/PANINI GRILL BUYING GUIDE

### SIZE OPTIONS

Size	7-in Series	14-in Series	28-in Series
Cooking Surface [in.]	7.5 x 14.2	14.5 x 14.2	28.3 x 14.2
Footprint Dims [in.]	10.38 x 23.30	16.50 x 23.30	34.30 x 23.30
Platens	Single 7" Platen	Single 14" Platens or Dual 7" Platens	Dual 14" Platens

### SANDWICH GRILL SIZE SELECTION

- Available counter-space may decide for you!
- Size of the cooked product is most important
- Standard tortillas come in 6"-14" diameters
- Bread/sandwich and protein batch sizes should be considered



### SPLIT TOP OPTION

- **Flexible** - split top option is great for varied menus and high volume applications
- **Independent electronic controls** and timers for each individual platen with convenient side-bar handles

### CONTROL OPTIONS



#### ANALOG

Dial thermostat, 1-10, for simplicity and operations with limited functional needs



#### ANALOG with TIMER

For more dynamic menus or busier locations where operators can get distracted



#### ELECTRONIC

Programmable for dozens of product time and temperature settings  
For high-volume operations with varied menus  
Easier to train operators, ensuring consistent results

### CLEANING TIPS



Aluminum and Cast Iron surfaces are porous. Carbon and oils can penetrate and discolor the surface while creating unwanted carbon and grease accumulation.

**Cleaning your sandwich grill effectively requires soapy water, a brush, and an abrasive pad.** When just soapy water isn't doing the trick, you can use commercial high-temperature grill cleaner. Grill cleaner is effective, especially when dealing with heavy accumulation.



# SANDWICH/PANINI GRILLS



## PRO-MAX 2-SIDED GRILLS

### STAR PRO-MAX PANINI SANDWICH GRILLS with TORSION SPRING HINGE



PST7I



PGT14



ANALOG Control NO TIMER			ANALOG Control ELECTRONIC TIMER		ELECTRONIC Control and TIMER		
Series No.	Type: A Aluminum	Type: I Iron	Type: T Aluminum	Type: IT Iron	Type: E Aluminum	Type: IE Iron	Type: D Aluminum Split-Top
SMOOTH PANINI GRILLS							
PST7	\$5,582	\$8,104	-	-	\$7,295	\$10,126	-
PST14	\$5,628	\$8,150	\$6,708	\$9,169	\$7,342	\$10,168	\$13,429
GROOVED PANINI GRILLS							
PGT7	\$5,582	\$8,104	-	-	\$7,295	\$10,126	-
PGT14	\$5,628	\$8,150	\$6,708	\$9,169	\$7,342	\$10,168	\$13,429
GROOVED TOP, SMOOTH BOTTOM PANINI GRILLS							
Series No.		Type: IGT		Type: ITGT	All prices F.O.B Smithville, TN		
PST14	-	\$8,150	-	\$9,169	See page 28 for a list of VOLTAGES AVAILABLE per model		

### STAR PRO-MAX PANINI SANDWICH GRILLS with COUNTER-BALANCE HINGE

ANALOG Control NO TIMER		ANALOG Control ELECTRONIC TIMER	ELECTRONIC Control and TIMER
Series No.	Type: I - Iron	Type: IT - Iron	Type: IE - Iron
<b>SMOOTH PANINI GRILLS</b>			
PSC28	\$15,453	\$16,983	\$18,480
<b>GROOVED PANINI GRILLS</b>			
PGC28	\$15,453	\$16,983	\$18,480
<b>GROOVED TOP, SMOOTH BOTTOM PANINI GRILLS</b>			
Series No.	Type: IGT	Type: ITGT	Type: IEGT
PSC28	\$15,453	\$16,983	\$18,480
All prices F.O.B Smithville, TN		See page 28 for a list of VOLTAGES AVAILABLE per model	



PSC28I





# SANDWICH/PANINI GRILLS



PST14

## PRO-MAX 2-SIDED GRILLS

### STAR PRO-MAX SPECIFICATIONS

Series Size	Volts <sup>1</sup>	Watts	NEMA Plug	Width [in.]	Depth [in.]	Height [in.]	Ship Wt. [lb.]	Freight Class
7-inch	120 230* 240	1310 1425	5-15P CEE7/7 6-15P	10.38	23.30	26.6 - open 10.0 - closed	55 (alum) 69 (iron)	85
14-inch SINGLE	120 120 (CSA) 230 (alum)* 230 (iron)* 208/240 (alum) 208/240 (iron)	1,800 1,800 (CSA) 1650 3306 1,350/1,800 2,700/3,600	5-15P 5-20P (CSA) CEE7/7 CEE7/7 6-15P 6-20P	16.50	23.30	26.6 - open 10.0 - closed	75 (alum) 109 (iron)	85
14-inch SPLIT-TOP ALUMINUM	120 120 (CSA) 230* 208/240	2,300 2,300 (CSA) 2,112 1,728/2,300	5-20P 5-30P (CSA) CEE7/7 6-15P	16.50	23.30	26.6 - open 10.0 - closed	75 (alum) 109 (iron)	85
28-inch IRON	208/240 208/240 (CSA)	5,400/7,200 5,400/7,200 (CSA)	6-30P 6-50P (CSA)	34.25	23.30	26.6 - open 10.0 - closed	206 (iron)	85
1 - Specify 120V, 208/240V or 230V and Canadian applications when ordering. Not all voltages available on all models. See page 28 for a list of voltages by model								
230V Options available for some PST/PGT models - SPECIFY 230V when ordering								





# SANDWICH/PANINI GRILLS



## PRO-MAX 2-SIDED GRILL - VOLTAGES

### STAR PRO-MAX PANINI SANDWICH GRILL VOLTAGES AVAILABLE (listed by model)

Series No.	Type: A Aluminum	Type: I Iron	Type: T Aluminum	Type: IT Iron	Type: E Aluminum	Type: IE Iron	Type: D Alum Split-Top
PST7	120V, 230V*	208/240V, 230V*	-	-	208/240V	208/240V, 230V*	-
PST14	120V, 120(CSA), 208/240V, 230V*		120V, 230V*	208/240V	120V, 208/240V, 230V*	120V, 208/240V	120V, 120(CSA), 208/240V, 230V*
PGT7	120V	120V, 230V*	-	-	120V, 208/240V	208/240V, 230V*	-
PGT14	120V, 120(CSA), 208/240V	120V, 120(CSA), 208/240V	120V, 240V	208/240V, 230V*	120V, 120(CSA), 208/240V, 230V*	120V, 240V, 230V*	120V, 208/240V, 230V*
PSC28	-	208/240V, 208/240(CSA)	-	208/240V, 208/240(CSA)	-	208/240V	-
PGC28	-	208/240V, 208/240(CSA)	-	208/240V, 208/240(CSA)	-	208/240V, 208/240(CSA)	-
Series No.		Type: IGT		Type: ITGT		Type: IEGT	
PST14	-	120V, 120(CSA), 208/240V	-	208/240V	-	208/240V	
PSC28	-	208/240V, 208/240(CSA)	-	208/240V	-	208/240V	



# TOASTERS HIGH-PERFORMANCE

## CONTACT & CONVEYOR MODELS

Built to stand up to the most rigorous foodservice operations

Fast, consistent heating that meets your toasting needs  
on demand with our wide variety of toasting options

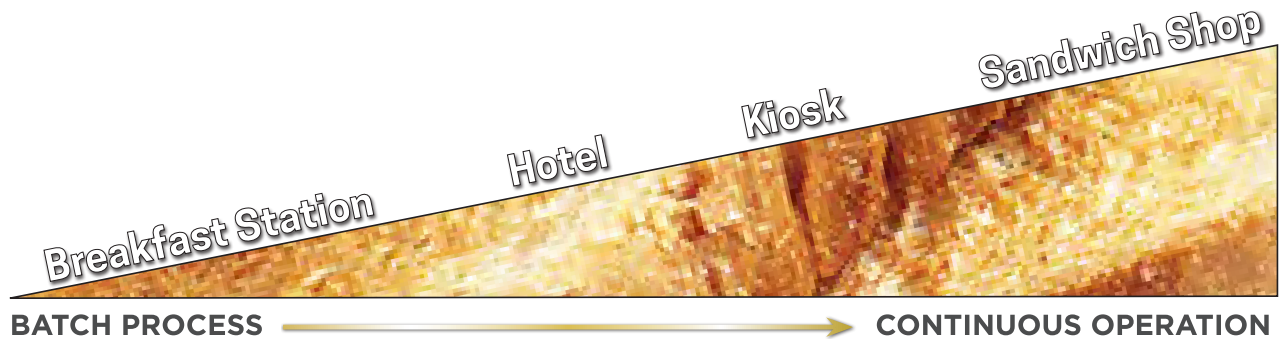


QCS3-1600B

# TOASTERS BUYING GUIDE

## HOW WILL YOU USE YOUR TOASTER?

- **BATCH PROCESS** - low volume & irregular
- **CONTINUOUS OPERATION** - high volume & ongoing



## WHAT ARE YOU TOASTING?

<i><b>OPENING SIZE PER PRODUCT</b></i>		
<b>BREAD</b> 1.5"	<b>BAGELS</b> 1.75"	<b>BUNS</b> 3.0"

Buns, bagels, and breads **all have varying heights**

Consider the height of your product when selecting the right toaster style





## SCT4000E VERTICAL CONTACT TOASTER

- First buns pass-through time is as low as 12 seconds fully caramelized
- Bun height adjustment controlled with an easily adjusted twist knob
- Supplied with an easy-to-install non-stick sheet
- Single piece front and rear silicone belts
- High-contrast display allows an infinite number of programmed product settings
- USB port programming allows easy uploading of new product files consistently, across any number of toasters

CAPABLE OF UP TO



**1,800**  
BUN-HALVES  
PER HOUR



two heels & two crowns  
at once, constant feed



SCT4000E

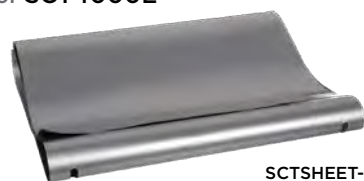
## HOLMAN SCT4000E VERTICAL CONTACT TOASTER

Model No.	Prices F.O.B. Smithville, TN	Description	CAPACITY per HOUR	Volts <sup>1</sup>	NEMA Plug	Watts	Width [in.]	Depth [in.]	Height [in.]	Ship Wt. [lb.]	Freight Class
SCT4000E	\$21,235	PROGRAMMABLE CONTROLS VARIABLE SPEED & TEMPERATURE CONTROL, DIGITAL STEPPER MOTOR	1,800 bun halves	208/240 230	6-15P CEE7/7	2,000/2,663 2,446	21.70	9.50	25.70	100	85

## ACCESSORIES

Model No.	List	Description
SCTBWP	\$2,393	PERFORATED BUTTER WHEEL for SCT
SCTBWS	\$1,723	SMOOTH BUTTER WHEEL for SCT
SCTSHEET-B	\$1,232	(10) NON-STICK SHEETS for SCT, BUTTER APPLICATIONS

non-stick sheet  
for SCT4000E



SCTSHEET-B



## HCT HORIZONTAL CONTACT TOASTERS

- Caramelize/seal buns & bread to extend holding time
- Durable Chain or non-marking Silicone belt options
- Analog and Electronic Control Options
- Knob adjustment for product height
- Low-profile design



### HOLMAN HCT HORIZONTAL CONTACT TOASTERS

Model No.	Belt Type	Voltage	Prices FOB Smithville, TN	Model No.	Belt Type	Voltage <sup>1</sup>	Prices FOB Smithville, TN
ANALOG CONTROLS				ELECTRONIC CONTROLS			
HCT13M	Metal Chain	208	\$10,058	HCTE13M	Metal Chain	208	\$11,127
HCT13M-240		240	\$10,058				
HCT13M-230		230	\$10,058				
HCT13S	Silicone	208	\$10,058	HCTE13S	Silicone	208	\$11,127
HCT13S-240		240	\$10,058				
HCT13S-230		230	\$10,058				

HCT model specs on table below. 1 -240 & 230V not available on HCTE13M & HCTE13S Electronic control models

## SPECIFICATIONS - HCT CONTACT TOASTERS

Model	BUN HALVES per HOUR	Volts <sup>1</sup>	NEMA Plug	Watts	Width [in.]	Depth [in.]	Height [in.]	Ship Wt. [lb.]	Freight Class
HCT13M HCTE13M	1700	208 240 230	6-20P 6-20P CEE7/7	2800 3000 2750	19.25	24.40	17.30	115	85
HCT13S HCTE13S		208 240 230	6-20P 6-20P CEE7/7	2550 2650 2450	19.25	24.40	17.30	115	85

1 -240V & 230V not available on HCTE13M & HCTE13S Elec.Control models

## ACCESSORIES

Model No.	List	Description
HCTEBW	\$1,233	BUTTER WHEEL for HCT
HCTFEED	\$370	FEEDER TRAY for HCT
CTSHEET10	\$341	(10) NON-STICK SHEETS for HCT



**Compact**, only 14<sup>1</sup>/<sub>2</sub> inches wide **MAXIMUM PERFORMANCE**  
**MINIMUM COUNTER SPACE**

## HOLMAN QCS1 COMPACT CONVEYOR TOASTERS

### QCS1 toasters

- Optimal performance in a compact size
- 10" w belt for up to 2-slices/bread, side-by-side
- Analog temperature & belt speed adjustment
- Bagel toaster heats max power on 1-side
- 120V service for use anywhere in your kitchen



### ⚡ HOLMAN QCS1 COMPACT CONVEYOR TOASTERS

ANALOG CONTROLS <sup>1</sup>		Slices per HOUR	Description	Volts	Watts	NEMA Plug	Width [in.]	Depth [in.]	Height [in.]	Ship Wt. [lb.]	Freight Class
QCS1-350	\$2,703	350	1.5" Opening COMPACT toaster	120	1600	5-15P	14.25	18.88	13.25	44	85
QCS1-500B	\$4,774	500	1.5" Opening BAGEL toaster	120	1600	5-15P	14.25	18.88	13.25	44	85

All prices F.O.B Smithville, TN

## HOLMAN QCS2 COMPACT CONVEYOR TOASTERS

### QCS2 toasters

- 10" w belt for up to 2-slices/bread, side by side
- Analog controls for belt speed, top and bottom heat
- Analog temperature & belt speed adjustment
- Programmable belt speed & top and bottom heat
- Inlet height options for toast, bagels, and buns



### ⚡ HOLMAN QCS2 CONVEYOR TOASTERS

ANALOG CONTROLS				Slices per HOUR	Description	Volts <sup>1</sup>	Watts	NEMA Plug	Width [in.]	Depth [in.]	Height [in.]	Ship Wt. [lb.]	Freight Class
QCS2-500	\$5,526				1.5" Opening COMPACT toaster	120	1,700	5-15P	14.50	22.38	15.63	64	85
QCS2-600H	\$6,093				3.0" Opening BUN toaster	208 240*	2,800	6-20P 6-20P	14.50	22.38	15.63	64	85
QCS2-800	\$5,311			800	1.5" Opening COMPACT toaster	208 240	2,800	6-20P 6-20P	14.50	22.38	15.63	64	85
QCS2-1200B	\$6,942			1,200	1.75" Opening BAGEL toaster	208	3,200	6-20P	14.50	22.38	15.63	64	85

All prices F.O.B Smithville, TN      1 - Specify 120V, 208V, 240V when ordering      \* 240V not available on QCSe2-600H model







## HOLMAN QCS3 HIGH-VOLUME CONVEYOR TOASTERS



### QCS3 toasters

- 14" wide belt for up to 3-slices of bread, side by side
- Analog controls for belt speed, top and bottom heat
- Programmable belt speed and top and bottom heat
- Inlet height options for toast, bagels, and buns

## ⚡ HOLMAN QCS3 HIGH VOLUME CONVEYOR TOASTERS

ANALOG CONTROLS		Slices per HOUR	Description	Volts <sup>1</sup>	Watts <sup>1</sup>	NEMA Plug	Width [in.]	Depth [in.]	Height [in.]	Ship Wt. [lb.]	Freight Class
QCS3-1000	\$6,842	1,000	1.5" Opening COMPACT toaster	208	3,200	6-20P	18.50	22.38	15.63	68	85
QCS3-950H	\$6,777	950	3.0" Opening BUN toaster	208 240	3,200	6-20P 6-20P	18.50	22.38	15.63	68	85
QCS3-1300	\$8,195	1,300	1.5" Opening COMPACT toaster	208	3,600	6-30P	18.50	22.38	15.63	68	85
QCS3-1600B	\$8,069	1,600	2.0" Opening BAGEL toaster	208	3,400	6-30P	18.50	22.38	15.63	68	85
All prices F.O.B Smithville, TN				1 - Specify 208V or 240V							



## HOLMAN DT14 & QCS3 SPECIALTY CONVEYOR TOASTERS

### HOLMAN SPECIALTY CONVEYOR TOASTERS



QCS3-1400BH

ANALOG CONTROLS		Slices per HOUR	Description	Volts <sup>1</sup>	Watts	NEMA Plug	Width [in.]	Depth [in.]	Height [in.]	Ship Wt. [lb.]	Freight Class	BELT Width & Capacity
DT14	\$14,366	2,000	2.25" Top Opening 1.75" Bottom Opening DOUBLE CONVEYOR toaster	208 240	4,800	6-30P	19.50	23.43	24.06	102	85	14" 3 Slices
QCS3-1400BH	\$8,814	1,400	3.0" Opening VARIABLE BAGEL & BREAD toaster	208 240	3,400	6-30P 6-30P	18.50	22.38	15.63	68	85	14" 3 Slices
All prices F.O.B Smithville, TN			1 - Specify 120V, 208V, or 240V Service when ordering. All units rated for 50-60Hz cycles.									

### DT14 TOASTER

#### "The Double Toaster"

**two conveyor belts, high production toasting!**

The DT14 Double Toaster defines productivity. Two variable speed conveyor belt controls and top/bottom heat controls for perfect color and texture on everything. Product entry opening adjustable from 1" to 2.25" high in top toaster. Bottom entry is 1.75".

DT14



### QCS3-1400BH TOASTER

#### "The Variable Toaster" two units in one, two ways to toast!

**switch from bread (2-sided toasting) to bagels (1-sided toasting)**

The QCS3-1400BH toaster takes production flexibility to a whole new level with the extra-wide 3" inlet. Normal operation, 3400W of power is applied evenly between top and bottom, like a standard toaster. A toggle switch in the lower left corner converts the unit to 3400W of TOP HEAT ONLY, for maximum bagel and bun productivity.



QCS3-1400BH



## ULTRA-MAX IMPINGEMENT CONVEYOR OVENS

Impingement Conveyor Ovens are great for...

- Toasting sandwiches, baking cookies & cinamon rolls
- Baking smaller blanched or par-baked pizzas
- High-volume, varied menu applications
- High power applications



**UltraMax**



### STAR ULTRA-MAX GAS IMPINGEMENT CONVEYOR OVENS - DIGITAL CONTROLS

Model No.	Price F.O.B. Smithville, TN	BTU <sup>1</sup>	Volts <sup>2</sup>	NEMA Plug	Chamber [in.]	Belt Width [in.]	Belt Length [in.]	Width [in.]	Depth [in.]	Height [in.]	Ship Wt. [lb.]	Freight Class
UM1854	\$37,262	40,000	120	5-15P	28	18.9	54	60.60	39.30	23.30	352	25
1 - Specify Natural Gas or Propane when ordering												
Gas Conveyor ovens can be stacked two (2) high				FREE START-UP for this product through approved service agent								



### STAR ULTRA-MAX ELECTRIC IMPINGEMENT CONVEYOR OVENS - DIGITAL CONTROLS

ELECTRIC CONVEYOR OVENS  
CAN BE STACKED 2-HIGH

Model No. Stainless Belt	Price F.O.B. Smithville, TN	Model No. PTFE Coated Belt	Price F.O.B. Smithville, TN	Volts <sup>1</sup>	NEMA Plug	Watts	Chamber [in.]	Belt Width [in.]	Belt Length [in.]	Width [in.]	Depth [in.]	Height [in.]	Ship Wt. [lb.]	Freight Class
UM1833A	\$23,221	-	-	208 240	6-30P 6-30P	6,400	24	18.9	33	37.20	30.40	20.00	272	85
UM1850A	\$24,493	UM1850AT	\$26,613	208 240	6-30P 6-30P	6,400	24	18.9	50	50.00	30.40	20.00	290	85
1 - Specify 208V or 240V Service														
Electric Conveyor ovens can be stacked two (2) high							FREE START-UP for this product through approved service agent							

## ACCESSORIES

Model No.	Price F.O.B. Smithville, TN	Description	Ship Wt. [lb.]	Freight Class
UMENTRY6	\$346	6" CONVEYOR ENTRY SHELF	3	85
UMEXIT8	\$298	8" CONVEYOR EXIT SHELF	4	85
UMEXIT11	\$298	11" CONVEYOR EXIT SHELF	3	85
ES-UM1854	\$5,106	EQUIPMENT STAND UM1854	50	85



## HOLMAN QUARTZ HEATER CONVEYOR OVENS

Quartz Conveyor Ovens are great for...

- Toasting sandwiches, baking cookies & cinamon rolls
- Baking smaller blanched or par-baked pizzas
- Countertop applications, limited space
- Lower power or low-voltage applications



210HX

## HOLMAN QUARTZ HEATER ELECTRIC CONVEYOR OVENS - ANALOG CONTROLS

ELECTRIC CONVEYOR OVENS  
CAN BE STACKED 2-HIGH

Model No.	Price F.O.B. Smithville, TN	Volts <sup>1</sup>	Watts	NEMA Plug	Chamber [in.]	Belt Width [in.]	Belt Length [in.]	Width [in.]	Depth [in.]	Height [in.]	Ship Wt. [lb.]	Freight Class
210HX	\$9,707	120 208 220	1,700 2,800 2,800	5-15P 6-20P 6-20P	17	10.0	31	31.00	15.44	14.00	60	85
214HX	\$10,533	208 240 220	4,000	6-30P 6-30P Field Wired	17	14.0	31	31.00	19.44	14.00	66	85
314HX	\$20,147	208 220	5,400	6-30P Field Wired	21.5	14.0	38	38.69	21.25	16.13	115	85

1 - Specify 120, 208V, 240V or 220V service when ordering. All units rated for 50-60Hz cycles.

Electric Conveyor ovens can be stacked two (2) high

## ACCESSORIES

Model No.	Price F.O.B. Smithville, TN	Description	Ship Wt. [lb.]	Freight Class
SSK-210HX	\$1,671	210HX STACKING KIT	22	85
SSK-214HX	\$1,671	214HX STACKING KIT	24	85
SSK-314HX	\$1,671	314HX STACKING KIT	38	85



314HX  
STACKED  
2-HIGH





# TORTILLA WARMER



## ROLLING TORTILLA WARMER

RTW19EA



Also great for FLATBREADS and PITAS

- Replaces the need to take up valuable flat grill space to simply warm tortillas, flatbreads, and pitas
- Easy to operate. Straightforward design and digital controls ensure effortless operation and minimal employee training
- Durable non-stick rollers make cleanup easy, resulting in a reduction in labor and chemical costs
- Easily programmable digital controls for unique menu items
- No hood required, place anywhere - counter or wall mount



### RTW14EA

6" TORTILLAS  
30 per minute

10" TORTILLAS  
12 per minute

12" TORTILLAS  
10 per minute

### RTW19EA

6" TORTILLAS  
45 per minute

10" TORTILLAS  
24 per minute

12" TORTILLAS  
12 per minute

PER MINUTE WITH SOME STACKING

## ⚡ STAR ELECTRIC TORTILLA, PITA & FLATBREAD WARMER

Model No.	Prices F.O.B Smithville, TN	# of 6-inch TORTILLAS per minute	Volts	NEMA Plug	Watts	Width [in]	Depth [in]	Height [in]	Ship Wt. [lb]	Freight Class
RTW14EA	\$16,397	30 tortillas	120 208/240	5-15P 6-15P	1,787 1351-1,787	19.6	21.3	12	69	85
RTW19EA	\$17,213	45 tortillas	208/240	6-15P	1,905-2,537	24	21.3	12	77	85

Specify Voltage when ordering.

## ACCESSORIES

Model No.	Prices F.O.B Smithville, TN	Description	Ship Wt. [lb.]	Freight Class
RTW14EA-WMB	\$313	14" WALL MOUNT KIT for RTW14EA	9	85
RTW19EA-WMB	\$360	19" WALL MOUNT KIT for RTW19EA	11	85



# DRAWER WARMERS



## TOASTMASTER DRAWER WARMERS

free-standing & built-in

Holds cooked foods at safe serving temperatures & proper moisture content.  
Holding temperature and moisture content can be set for the type of food being held,  
ideal for baked potatoes, vegetables, buns, rolls, ribs and more!



### ⚡ TOASTMASTER FREE-STANDING DRAWER WARMERS



Model No.	Price FOB Smithville, TN	# Drawers	# Tstats	Steam Pan Size [in.]	Volts	Watts	NEMA Plug	Width [in.]	Depth [in.]	Height [in.]	Ship Wt. [lb.]	Freight Class
<b>ONE (1) DRAWER WARMER - FREE STANDING</b>												
3A81DT09	\$5,678	1	1	20x12x5	120	400	5-15P	29.19	19.53	15.00	94	85
<b>TWO (2) DRAWER WARMERS - FREE STANDING</b>												
3B84DT09	\$10,621	2	2	20x12x5	120	900	5-15P	23.19	19.53	25.56	140	85
<b>THREE (3) DRAWER WARMERS - FREE STANDING</b>												
3C84DT09	\$14,014	3	3	20x12x5	120	1,350	5-15P	29.19	19.53	29.19	223	85

### ⚡ TOASTMASTER BUILT-IN DRAWER WARMERS

Model No.	Price FOB Smithville, TN	# Drawers	# Tstats	Steam Pan Size [in.]	Volts <sup>1</sup>	Watts	Width [in.]	Depth [in.]	Height [in.]	Ship Wt. [lb.]	Freight Class
<b>ONE (1) DRAWER WARMER - BUILT-IN</b>											
3A20AT09	\$6,100	1	1	16x16x5	120	450	23.06	23.00	12.13	82	85
3A80AT09	\$5,629	1	1	20x12x5	120	400	29.19	19.53	10.88	84	85
3A80AT72	\$5,571	1	1	20x12x5	208/240	400/540	29.19	19.53	10.88	84	85
<b>TWO (2) DRAWER WARMERS - BUILT-IN</b>											
3B20AT09	\$9,689	2	1	16x16x5	120	1000	23.19	23.00	22.75	138	85
3B80AT09	\$8,901	2	1	20x12x5	120	1000	29.19	19.53	21.75	144	85
3B80AT72	\$8,986	2	1	20x12x5	208/240	900/1200	29.19	19.53	21.75	144	85
3B84AT09	\$10,485	2	2	20x12x5	120	900	29.19	19.53	21.75	144	85
3B84AT72	\$10,386	2	2	20x12x5	208/240	850/980	29.19	19.53	21.75	144	85
<b>THREE (3) DRAWER WARMERS - BUILT-IN</b>											
3C80AT09	\$11,873	3	1	20x12x5	120	1350	29.19	19.53	29.18	186	85

All built in drawer warmers are field wired. 1 - Specify 120V or 208/240V Service when ordering.



# HOT DOG EQUIPMENT

## GRILL-MAX ROLLER GRILLS

ANALOG & ELECTRONIC CONTROL OPTIONS

BUILT-IN BUN DRAWER OPTIONS

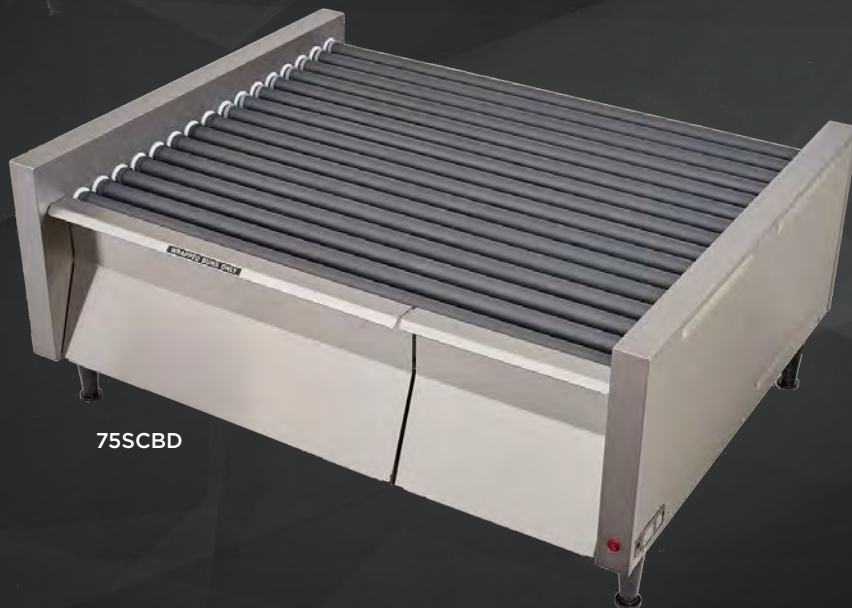
STALTEK, DURATEC & CHROME ROLLER OPTIONS

## BUN BOXES • SNEEZE GUARDS • ACCESSORIES

STAINLESS STEEL & CLEAR DOOR BUN BOX OPTIONS

1 OR 2-DOOR, SHEILD & GLASS CANOPY SNEEZE GUARD OPTIONS

DIVIDER KITS & MERCHANDISING DOORS



75SCBD



SS30BBC



## ROLLER GRILL BUYING GUIDE

### ROLLER FINISH OPTIONS



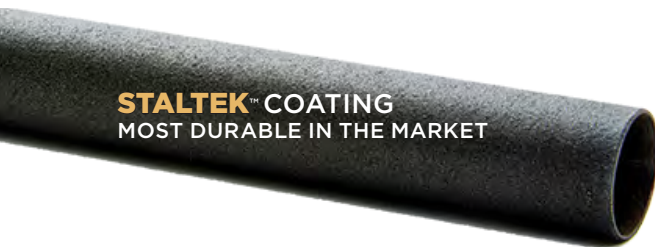
#### STALTEK™ COATING

- Most durable coating in the market
- Star exclusive innovative coating
- Unparalleled grip performance
- Coating rolls uneven product
- Withstands vigorous cleaning



#### DURATEC™ COATING

- Non-stick roller coating facilitates cleaning
- Finish designed to grip and turn consistently



### CONTROL OPTIONS

#### ANALOG VS. ELECTRONIC

##### ANALOG CONTROLS

Analog controls for front and rear temperature zones are durable and economical, but don't allow for fine temperature adjustments

##### ELECTRONIC PROGRAMMABLE CONTROLS

Electronic controls allow the roller grill to react to grill surface temps, resulting in consistent temperatures and better quality products.

Program individual product cook/hold times & temps, taking the guesswork out of preparing menu items



ANALOG



ELECTRONIC

### BUN DRAWERS

#### BUILT-IN VS. STAND ALONE

##### BUILT-IN BUN DRAWER

Eliminates the need for a separate piece of equipment, but has limited capacity as to storage

##### STAND ALONE BUN DRAWER

May be heated or unheated, depending on the bread and if buns are individually wrapped Can be stacked beneath a roller grill, which increases height. Can be built-in to cabinets, or drop surfaces

### ROLLER GRILLS FEATURE STADIUM SEATING

Stadium seating slanted roller design provide a 3° to 5° slope for the best presentation of your products increasing sales and impulse purchases

Flat roller grills available! Used for double-sided or employee serving, and can be recessed below the counter. Contact factory for details and pricing







## ROLLER GRILL BUYING GUIDE

### ROLLER GRILL SPECS

Series No.	Width [in.]	Depth [in.]	Height [in.]	Ship Wt. [lb.]	Bun Drawer Ship Wt. [lb.]
20	17.13	20.63	12.50	44	-
30	23.75	20.63	12.50	53	63
45	23.75	28.50	12.50	69	80
50	35.75	20.63	12.50	69	80
75	35.75	28.50	15.50	108	120

### Series No. & Roller Grill Capacity

#### SERIES NO. & ROLLER GRILL CAPACITY

Series No.	Capacity* Hot Dogs	Description
20	20 hot dogs	Ideal for low-volume locations, small to no product variation and small footprint areas. 11 rollers per grill
30	30 hot dogs	Popular size. 11 rollers per grill
45	45 hot dogs	Great for deeper countertops with limited left-to-right space. 16 rollers per grill
50	50 hot dogs	Most popular size. 11 rollers per grill
75	75 hot dogs	Lots of room for high-volume locations. 16 rollers per grill

#### INDUSTRY INNOVATION LEADERS

UNITED STATES PATENT NUMBERS

6,393,971 | 6,782,802 | 7,520,211

6,659,574 7,367,261 | 7,334,517

6,707,015 and counting!



# ROLL

A **WIDE RANGE**  
OF **PRODUCTS**  
WITH **GRILL-MAX**



# ROLLER GRILLS / HOT DOG EQUIPMENT



## GRILL-MAX ROLLER GRILLS



### ⚡ STAR GRILL-MAX ROLLER GRILLS

ANALOG Controls				ELECTRONIC Controls				
Series No.	Capacity Hot Dogs	Type: SC Duratec	Type: ST StalTek	Type: SCE Duratec	Type: STE StalTek	Volts <sup>1</sup>	Watts	NEMA Plug
20	20 dogs	\$4,863	-	-	-	120	930	5-15P
30	30 dogs	\$5,116	\$5,639	\$6,454	\$6,973	120	1150	5-15P
45	45 dogs	\$6,718	\$7,758	\$8,057	-	120 120 (CSA)** 230* *45SC & 45SCE	1650 1700 (CSA) 1650	5-15P 5-20P (CSA) CEE7/7
50	50 dogs	\$6,093	\$6,906	\$7,427	\$8,244	120 120 (CSA)**	1535 1535 (CSA)	5-15P 5-20P (CSA)
75	75 dogs	\$9,554	\$11,456	\$10,889	\$12,792	120 120 (CSA)**	1730 1730 (CSA)	5-15P 5-20P (CSA)
1 - * 230v Service available for upcharge				All prices F.O.B Smithville, TN				
				** 120V (CSA) Canadian Service available for models - 45SCE, 50SCE, 50STE, 75SCE				

[Roller Grill Specs & capacity on page 42](#)

[Built-in Bun Drawer Roller Grill options on page 44](#)

[Roller Grill Sneeze Guards & Accessories on page 45](#)

**ROLL**  
A **WIDE RANGE**  
OF **PRODUCTS**  
WITH **GRILL MAX**

75STBD with  
SNEEZE  
GUARD





## GRILL-MAX ROLLER GRILLS with BUILT-IN BUN DRAWER



75SCBD

### ⚡ STAR GRILL-MAX ROLLER GRILLS with BUILT-IN BUN DRAWER

ANALOG Controls				ELECTRONIC Controls				
Series No.	Capacity Hot Dogs	Type: SCBD Duratec	Type: STBD StalTek	Type: SCBDE Duratec	Type: STBDE StalTek	Volts <sup>1</sup>	Watts	NEMA Plug
30	30 dogs 32 buns	\$6,711	\$7,231	\$8,046	\$8,570	120	1150	5-15P
45	45 dogs 32 buns	\$8,315	\$9,353	\$9,651	\$10,688	120	1650	5-15P
50	50 dogs 48 buns	\$7,686	\$8,503	\$9,021	\$9,836	120 120 (CSA)* 208/240**	1535 1535 (CSA) 1250/1670	5-15P 5-20P (CSA) 6-15P
75	75 dogs 48 buns	\$11,149	\$13,047	\$12,482	\$14,387	120 208/240**	1730 1810/2400	5-15P 6-20P
* 120V (CSA) Canadian Service available for models - 50STBD, 50STBDE						All prices F.O.B Smithville, TN		
** 208/240V Service available for models - 50STBD, 50STBDE, 75STBD, 75SCBDE, 75STBD								





# ROLLER GRILLS / HOT DOG EQUIPMENT



## BUN BOXES, SNEEZE GUARDS & ROLLER GRILL ACCESSORIES

### STAR GRILL-MAX



SS50BBC  
UNHEATED  
CLEAR BUN DOOR



Model No.	Bun Box STAINLESS STEEL	Description	Width [in.]	Depth [in.]	Height [in.]	Ship Wt. [lb.]	Freight Class
SS50BB	\$2,292	Series 50 & 75 (Capacity: 64 buns)	35.75	20.60	6.90	49	100

SIGN HOLDER 50SH

GLASS CANOPY  
SNEEZE GUARD  
50SG-G



30SG-1D



30SGS

### STAR SNEEZE GUARDS

Series No.	Type: SG-1D Single Door Polycarbonate	Type: SG-2D Double Door Polycarbonate	Type: SGS Shield¹ Polycarbonate	Ship Wt. [lb.]	Type: SG-G Glass Canopy	Type: SH Sign Holder²	Ship Wt. [lb.]	Freight Class
20	\$955	-	-	7	-	-	-	100
30	\$1,044	\$1,133	\$261	9	\$1,695	-	32	100
45	\$1,201	-		13	\$1,908			100
50	\$1,363	\$1,467	\$372	17	\$1,981	\$394	45	100
75	\$1,608	\$1,841		18	\$2,628			100
1 - Optional shield to convert sneeze guard doors into a pass-thru sneeze guard						All prices F.O.B Smithville, TN		
2 - Optional sign holder for Glass Canopy sneeze guards								



#### GLASS SNEEZE GUARDS

Open concept is modern looking and easy to clean

#### PLEXI-GLASS POLYCARBONATE SNEEZE GUARDS

Enclosed design keeps 10-15°F higher temps

### MERCHANDISING DOORS & MISC. ROLLER GRILL ACCESSORIES

Model No.	Price F.O.B Smithville, TN	Description	Ship Wt. [lb.]	Freight Class
<b>MERCHANDISING DOORS</b>				
20RGMD	\$343	Series 20 doors	5	100
30RGMD	\$401	Series 30 & 45 doors	5	100
50RGMD	\$440	Series 50 & 75 doors	7	100
<b>OTHER ACCESSORIES</b>				
RGLK	\$173	4" Adjustable Legs	2	100
THU	\$240	Tong Holder	1	100

### DIVIDER KITS

Model No.	Price F.O.B Smithville, TN	Description	Ship Wt. [lb.]	Freight Class
30RGDKC	\$572	Series 30	2	100
45RGDKC	\$783	Series 45	4	100
50RGDKC	\$607	Series 50	6	100
75RGDKC	\$838	Series 75	8	100



DIVIDER KIT  
30RGDKC





# WAFFLE BAKERS



## WAFFLE BAKERS



SWBS



SWBD

### STAR WAFFLE MAKERS TRADITIONAL & BELGIAN STYLE

Model No.	Price F.O.B Smithville, TN	Description	Volts <sup>1</sup>	Watts	NEMA Plug	Width [in.]	Depth [in.]	Height <sup>2</sup> [in.]	Ship Wt. [lb.]	Freight Class
SWBB	\$7,160	7" DIAMETER BELGIAN WAFFLE SINGLE	120 208/240 230*	900 675/900 900	5-15P 6-15P CEE7/7	10.19	14.00	10.56	30.2	85
SWBS	\$3,365	7" DIAMETER TRADITIONAL WAFFLE SINGLE	120 208/240	900 675/900	5-15P 6-15P	10.13	13.50	8.75	15	85
SWBD	\$5,623	7" DIAMETER TRADITIONAL WAFFLE DOUBLE	120 208/240	1800 1350/1800	5-15P 6-15P	19.81	13.50	8.75	28	85
1 - * 230V Service available for model - SWBB			2 - Height measurement information for closed waffle maker							

**WAFFLE BAKER**  
**RECIPES, VIDEOS & MORE**  
**VISIT STAR-MFG.COM**



<https://star-mfg.com/product/star-waffle-makers-traditional-belgian-style-swbd/>



# HEATED PERISTALTIC DISPENSERS



## HEATED PERISTALTIC DISPENSERS



HPDE2H



HPDE1H



## STAR HEATED PERISTALTIC DISPENSERS

Model No.	Price F.O.B Smithville, TN	Description	Volts <sup>1</sup>	NEMA Plug	Watts	Width [in.]	Depth [in.]	Height [in.]	Ship Wt. [lb.]	Freight Class
HPDE2	\$5,331	DOUBLE DISPENSER 75RPM, 1 oz/3 sec	120	5-15P	1,000	14.30	20.60	26.80	61	100
HPDE2H	\$5,331	DOUBLE DISPENSER HIGH PERFORMANCE 180RPM, 1oz/sec	120	5-15P	1,000	14.30	20.60	26.80	61	100
HPDE2H-230V	\$5,876		230*	CEE 7/7						
HPDE2HP	\$5,876	DOUBLE DISPENSER HIGH PERFORMANCE 180RPM, 1oz/sec PORTION CONTROL	120	5-15P	1,000	14.30	20.60	26.80	61	100
HPDE1H	\$4,276	SINGLE DISPENSER HIGH PERFORMANCE 180RPM, 1oz/sec	120	5-15P	820	9.60	20.60	26.80	48	100
HPDE1HP	\$4,774	SINGLE DISPENSER HIGH PERFORMANCE 180RPM, 1oz/sec PORTION CONTROL	120	5-15P	820	9.60	20.60	26.80	48	100

1 - \* 230V Service available on HPDE2H NOTE: \* HPDE1HP-230V model - upcharge: Add \$462 to the (HPDE2H 120v model \$4,522) for 230V Service

# MAP/M.R.I.C.P. POLICY



## APW/Bakers Pride/Star Holdings Group (Holman, Lang, MagiKitch'n, Star, Toastmaster & Wells)

Minimum Advertised Price & Minimum Resale Internet Cart

### MINIMUM ADVERTISED PRICE (MAP) POLICY

**This Policy applies to all means of Advertised Pricing for all Middleby Commercial Foodservice Brands**

The APW/Bakers Pride/Star Holdings Group (hereinafter "the Group") and the Middleby Corporation (hereinafter "the Corporation") is committed to supporting our Authorized Dealers and Resellers selling the Group's products in or into the United States & Canada by continuing to provide high-quality, premium products for the foodservice industry while maintaining its brand equity and integrity. This Minimum Advertised Price Policy ("MAP") applies to ANY and ALL means of Advertised Pricing, to Any and ALL customers, for all Brands within the Group and the Corporation. Advertising at a price below MAP will be considered a violation of this Policy. This MAP Policy will apply to any activity which the Group or the Corporation determines, in their sole and absolute discretion, is designed or intended to circumvent the intent of this MAP Policy.

- MAP Policy pricing is the Current List Price less 45% for all Group products; and advertised at a price no less than rounded down to the nearest whole number off the Current List Price.
- If a Dealer offers or combines (i.e., "bundling") one or more products from a single or multiple brands of the Group or the Corporation in an advertisement, the aggregate price for all products by the Group and Corporation offered for sale in combination may not be lower than the cumulative MAP for each of the products when sold separately.
- At the Dealer's sole expense, the Dealer may offer or combine the following items of casters, warranty or freight into their product's sell price; not to be below the product's MAP price.

The MAP Policy applies to any advertisements of the Group's products and designs in any and all media, including but not limited to, print advertising (e.g. magazines, catalogs, newspapers, posters, flyers and direct mail), e-mail and facsimile advertising (e.g. broadcast campaigns, flyers, coupons and similar inserts), internet or similar electronic media (e.g. Amazon, eBay, Google), Dealer websites, internet banner ads, social media blasts, social networks, search engine advertising and all other types of digital signage.

All internet advertised prices must show the product's "MAP" price or higher. Any communications stating or implying that a price below MAP may be found elsewhere on the site, that is initiated by the Dealer, would constitute advertising and would be deemed a violation of this MAP Policy. Dealers may not make any statements, displays, or communications that indicate, state, imply, or suggest that a lower price may be found at the online check out, including but not limited to: "Call for Pricing", "Chat for Pricing", "Text for Pricing", "Click for Pricing", "Email for Pricing", "Add to Cart for Pricing", "Mouse Over for Pricing", "Log In for Pricing", strike-through the price, or any of the like. This includes "shopping cart price", "chat box price" and "emailed price" that appear on the internet in any format on any Dealer's public internet website or public internet-based account, including internet search engine shopping feeds, are all subject to the Group and the Corporate MAP Policy. Website features such as automated "bounce-back" pricing emails, pre-formatted email responses, forms, automatic price display, loyalty and reward point systems and other similar features are considered "advertising" under this MAP Policy. Under this MAP Policy, the Group and the Corporation prohibit the use of split-screen, side-by-side advertising, or pop-ups to advertise a similar product of any other brand other than those that are manufactured by other brands within the Corporation. The Group and the Corporation prohibit any Dealer from redirecting (automatically, inadvertently or otherwise) a customer who is in search of a product of the Group, the Corporation or item number to any other non-Middleby brand.

No Dealer may advertise a product of the Group or the Corporation at a price in violation of this MAP Policy on any third-party platform such as Amazon, eBay, Google or any like platforms in which it may operate as a vendor or have a re-distributor operate on its behalf. No Dealer may advertise a price in violation of this MAP Policy in an effort to match or beat a competitor's price. It is a violation of the MAP Policy to advertise a price below MAP pricing, even if such advertised price was automatically or manually generated due to a MAP Policy violation by a vendor or competition another medium or platform.

From time to time, the Group or the Corporation may discontinue certain products or engage in promotions with respect to certain products. In such events, the Group and the Corporation reserve the right to modify or suspend the MAP Policy with respect to the affected products at its sole discretion. Such changes shall apply equally to all Authorized Dealers of the Group and the Corporation.

### MINIMUM RESALE INTERNET CART PRICE (MRICP) POLICY

The Minimum Resale Internet Cart Price ("MRICP") applies to the final internet check out prices regardless of providing a customer "log in", membership or similar (e.g., shopping cart prices, chat box prices, emailed prices, and prices on the internet website or search engines) of the Group's or the Corporation's products. The Group requires that when Dealers sell select products (listed below) through internet sales that these products are subject to MRICP and are sold at a price no more than a 52% discount rounded down to the nearest whole number off the current List Price. This MRICP Policy will apply to any activity which the Group or the Corporation determines, in their sole and absolute discretion, is designed or intended to circumvent the intent of this MRICP Policy.

*MAP/M.R.I.C.P. policy continued next page*

# MAP/M.R.I.C.P. POLICY

*policy continued from previous page*

The MAP Policy and MRICP Policy apply only to advertised prices and do not apply to the price at which the products are actually sold or offered for sale to an individual customer at a Dealer's place of business, including contract negotiations, or negotiations in the field. The decision to implement and enforce the MAP Policy and the MRICP Policy is solely to protect the Group's and the Corporation's brands, reputation and competitiveness and the Authorized Dealers who promote and sell their products based on quantitative and qualitative factors.

## The MRICP policy applies to the following Group Brands and Brand product segments

### Brands in their Entirety

**Bakers Pride**

**Lang**

**MagiKitch'n**

### Star Categories

**Holman** conveyor toasters

(All Labeled Products)

**Pro-Max** Panini's

(PST, PGT, PSC, PGC-Series Products)

**Star** (RTW-Series Products)

**Star-Max** (500 & 600-Series Products)

**Ultra-Max** (All Labeled Products)

### Wells Categories

Drawer Warmers

Heated & Refrigerated Wells

(HT, H/RCP-Series)

Dry Wells (MDW models)

All Ventless Products

## POLICY VIOLATIONS

These MAP and MRICP Policies are not intended as, nor are they to be construed as, an attempt by the Group or the Corporation to set advertised or resale prices or an agreement between the Group, the Corporation and any Authorized Dealer or other party. In addition, the Group and the Corporation will not accept any assurances of compliance with these MAP or MRICP Policies from any Authorized Dealer. Each Authorized Dealer must independently choose whether to comply with the terms of these MAP and MRICP Policies. These MAP and MRICP Policies are not negotiable and will not be altered for any individual Authorized Dealer.

The Group, the Corporation or their agent(s) will conduct a reasonable investigation in response to a suspected MAP and MRICP Policy violation. Failure to cooperate by any Authorized Dealer, including retaliatory actions by any Authorized Dealer with the Group's or the Corporation's investigation will be considered an additional violation.

Failure to meet the terms and conditions of the MAP and MRICP Policies will result in full, unconditional enforcement of the penalties described below. The event of a violation will be determined solely by the Group or the Corporation.

Dealer will be subject to penalties (over a 12-month period) up to and including but not limited to:

- **1st violation:** The Group or the Corporation at a minimum will issue an email communication to the non-compliant dealer requesting their compliance to the MAP and MRICP Policies. Failure to comply within 48 hours (2 days) or a repeated offense within a 3-month period will be considered a 2nd violation.
- **2nd violation:** The Group or the Corporation at a minimum will issue an email notification to the non-compliant dealer requesting their compliance to the MAP and MRICP Policies and will hold all Group shipments and/or the Corporation, until all violations are resolved. Failure to comply within 48 hours (2 days) or a repeated offense within a 6-month period will be considered a 3rd violation.
- **3rd violation** and each violation thereafter: The Group or the Corporation at a minimum will issue an email notification to the non-compliant dealer and buying group as applicable requiring their compliance to the MAP and MRICP Policies and will result in **(a) the dealer's net pricing being increased to a price that is 50% off of the Group's then current published List Price(s) and net pricing increased to standard market discounts off ALL Middleby Corporation Brands published List Prices and (b) any and ALL available rebates, marketing incentives, or program dollars (accrued or due in total) will be forfeited.** Failure to comply within 48 hours (2 days) or a repeated offense within a 12-month period, the Group or the Corporation at a minimum will issue an email notification to the non-compliant Dealer and buying group as applicable informing them of the a) indefinite suspension of their account with the Group and ALL Middleby Corporation Brands and b) permission to use the Group's and the Corporation's brand trademarks, trade names, individual brand and corporate logos, product images and product content will be indefinitely revoked. Reinstatement of the account, preferred pricing and applicable incentives or rebates may be re-evaluated by the Group and the Corporation in their sole discretion after 30 days.

## DEALER ACCOUNTABILITY

In the case of a MAP or MRICP violation by a reseller who does not have an authorized relationship with the Group's or the Corporation's brands and instead purchases the Group's or the Corporation's products from an Authorized Dealer or any other reseller (i.e., dealer-to-dealer sale), the Group and the Corporation will pursue enforcement actions against the Authorized Dealer as provided above in these Policies.

## OTHER PROVISIONS

These Policies are managed by the MAP/MRICP Policy Administrator(s) for the Group and the Corporation. Only the MAP/MRICP Policy Administrator(s), Group President and Group Vice President of Sales and Marketing may provide direction to Dealers concerning compliance with the MAP and MRICP Policies. And ONLY the Group Vice President of Sales and Marketing and Group President may authorize exceptions to the Policies. No other individuals, including any employee or representative of the Group or the Corporation, may provide such direction or authorizations regarding the Group's Policies to any Dealer. It is the Dealer's sole responsibility to remain aware of any changes to the MAP and MRICP Policies.

The terms of the MAP and MRICP Policies are confidential and are not to be disclosed to other parties. The Group and the Corporation have adopted the MAP and MRICP Policies unilaterally in furtherance of its independent business strategy and reserves, at its sole discretion, the right to change the Policies and to interpret, enforce and otherwise handle all questions and issues related to the Policies.



# WARRANTY

## LIMITED EQUIPMENT WARRANTY

Star Manufacturing [as well as its subsidiaries] warrants to the original purchaser of new Star products to be free from defects in material or workmanship, under normal and proper use and maintenance service as specified by Star and upon proper installation and start-up in accordance with the instructions supplied with each Star unit. Star's obligation under this warranty is limited to a period of one [1] year beginning from the date of original installation. The warranty period begins upon the date of original installation or up to six [6] months after the original shipment, from the factory, of the covered product. Defects that occur as a result of normal use, within the time period and limitations defined in this warranty, will at Star's discretion have the parts replaced or repaired by Star or a Star-authorized service agency.

## THIS WARRANTY IS SUBJECT TO ALL LISTED CONDITIONS

Repairs performed under this warranty are to be performed by a Star authorized service agency. Star will not be responsible for charges incurred or service performed by non-authorized repair agencies. In all cases, the nearest Star-authorized service agency must be used. Star will be responsible for normal labor charges incurred in the repair or replacement of a warranted product within 50 miles (80.5 km) of an authorized service agency. Time and expense charges for anything beyond that distance will be the responsibility of the owner. All labor will need to be performed during regular service hours. Any overtime premium will be charged to the owner. For all shipments outside the U.S.A. and Canada, please see the International Warranty for specific details. It is the responsibility of the owner to inspect and report any shipping damage claims, hidden or otherwise, promptly following delivery. No mileage or travel charges will be honored on any equipment that is deemed portable. In general, equipment with a cord and plug weighing less than 50 lb. (22.7 kg) is considered portable and should be taken or shipped to the closest authorized service agency, transportation prepaid.

## PORTABLE EQUIPMENT EXAMPLES

- QCS1, QCS2, and RCS2 toasters
- Condiment dispensers

## CONTACT

Should you require any assistance regarding the operation or maintenance of any Star Manufacturing; phone, email or fax our service department. In all correspondence provide the model number and serial number of the unit needing service; include the voltage or gas type.

Normal Business Hours: 8:00 a.m. to 5:00 p.m. Central

Telephone: 800-264-7827 Tech Service Option 2

Email: [TechService@partstown.com](mailto:TechService@partstown.com)

[www.Star-Mfg.com](http://www.Star-Mfg.com)

## WARRANTY EXCLUSIONS

### THE FOLLOWING WILL NOT BE COVERED UNDER WARRANTY.

Star's sole obligation under this warranty is limited to either repair or replacement parts, subject to the additional limitations detailed below. This warranty neither assumes nor authorizes any person to assume obligations other than those expressly covered by this warranty.

- Any product which has not been used, maintained, or installed in accordance with the directions published in the appropriate installation sheet and/or owner's manual, including incorrect gas or electrical connection. Star is not liable for any unit which has been mishandled, abused, misapplied, subjected to harsh chemicals, modified by unauthorized personnel, damaged by flood, fire, or other acts of nature [or God], or which have an altered or missing serial number.
- Installation, labor, and job checkouts, calibration of heat controls, air and gas burner/bypass/pilot adjustments, gas or electrical system checks, voltage and phase conversions, cleaning of equipment, or seasoning of griddle surface.
- Replacement of fuses or resetting of circuit breakers, safety controls, or reset buttons.
- Replacement of broken or damaged glass components, quartz heating elements, and light bulbs.
- Labor charges for all removable and consumable parts in gas charbroilers and hotplates, including but not limited to burners, grates, and radiants.
- Any labor charges incurred by delays, waiting time, or operating restrictions that hinder a service technician's ability to perform service.
- Replacement of parts that fail or are damaged due to normal wear or labor for replacement of parts that can be replaced during a daily cleaning routine, such as but not limited to silicone belts, PTFE non-stick sheets, control labels, knobs, bulbs, fuses, quartz heating elements, baskets, racks, and grease drawers.
- Any economic loss of business or profits.
- Non-OEM parts. Use of non-OEM parts without Star's approval will void the warranty.
- Units exceeding one [1] year from original installation date.

### ADDITIONAL WARRANTIES

- Specific/chain-specific equipment may have additional and/or extended warranties.

PRODUCTS	PARTS	LABOR
Star Ultra Max ® fryers, griddles, charbroilers and hotplates	2 years	2 years
Star Max ® fryers, griddles, charbroilers and hotplates	2 years	2 years
Staltek™ roller grill coatings	5 years	
Cast iron grates, burners and burner shields	1 year	
Original Star, Toastmaster or Holman parts sold to repair equipment	90 days	

The foregoing warranty is in lieu of any, and all other warranties expressed or implied and constitutes the entire warranty.

# INTERNATIONAL WARRANTY

## ORIGINAL EQUIPMENT WARRANTY

### INTERNATIONAL

(Except U.S. and Canada)

STAR, APW WYOTT, BAKERS PRIDE, LANG, MAGIKITCH'N, TOASTMASTER, WELLS products are warranted to each original Buyer and will be free from defects in material and workmanship for the period specified below, under normal and proper use and maintenance service as specified by "STAR, APW WYOTT, BAKERS PRIDE, LANG, MAGIKITCH'N, TOASTMASTER, WELLS" and upon proper installation and start-up in accordance with the instructions supplied with each. Obligation under this warranty shall be limited to repairing or replacing, at its option, any part found to be defective within the specified warranty period.

#### **STANDARD PRODUCT WARRANTY PERIOD**

##### **One (1) Year Limited Parts only**

The warranty period begins upon the earlier of the date between proof of installation or 90 days after Invoice date or 90 days after shipping date.

No other Warranty terms are valid unless agreed and authorized by STAR, APW WYOTT, BAKERS PRIDE, LANG, MAGIKITCH'N, TOASTMASTER, WELLS

Any labor expense or part failure incurred after the warranty period will be the responsibility of the end user.

#### **WARRANTY EXCLUSIONS**

##### **THE FOLLOWING WILL NOT BE COVERED UNDER WARRANTY.**

STAR, APW WYOTT, BAKERS PRIDE, LANG, MAGIKITCH'N, TOASTMASTER, WELLS sole obligation under this warranty are limited to either repair or replacement parts, subject to the additional limitations detailed below. This warranty neither assumes nor authorizes any person to assume obligations other than those expressly covered by this warranty.

- Any product which has not been used, maintained, or installed in accordance with the directions published in the appropriate installation sheet and/or owner's manual, including incorrect gas or electrical connection. STAR, APW WYOTT, BAKERS PRIDE, LANG, MAGIKITCH'N, TOASTMASTER, WELLS are not liable for any unit which has been mishandled, abused, misapplied, subjected to harsh chemicals, modified by unauthorized personnel, damaged by flood, fire, or other acts of nature [or God], or which have an altered or missing serial number.
- Installation, labor, and job checkouts, calibration of heat controls, air and gas burner/bypass/pilot adjustments, gas or electrical system checks, voltage and phase conversions, cleaning of equipment, or seasoning of surfaces.
- Replacement of fuses or resetting of circuit breakers, safety controls, or reset buttons.
- Replacement of broken or damaged glass components, quartz heating elements, and light bulbs.
- Labor charges for all removable and consumable parts.
- Any labor charges incurred by delays, waiting time, or operating restrictions that hinder a service technician's ability to perform service.

*International Warranty continued on next page*

# INTERNATIONAL WARRANTY

*International Warranty continued from previous page*

- Replacement of parts that fail or are damaged due to normal wear or labor for replacement of parts that can be replaced during a daily cleaning routine, such as but not limited to silicone belts, PTFE non-stick sheets, control labels, knobs, bulbs, fuses, quartz heating elements, baskets, racks, and grease drawers.
- Any economic loss of business or profits
- Non-OEM parts. Use of non-OEM parts without STAR, APW WYOTT, BAKERS PRIDE, LANG, MAGIKITCH'N, TOASTMASTER, WELLS 's approval will void the warranty.

## CONTACT

[International@partstown.com](mailto:International@partstown.com)

[www.partstown.com](http://www.partstown.com)

Phone: +1-630-866-4385 during normal Business Hours, 8:30 am to 4:30 pm, US Central Standard Time (CST)

In all correspondence provide:

- Serial number - **mandatory**
- Model number/Brand name
- Sales Acknowledgment/Order Confirmation's reference/number, if available
- Include Site's voltage or gas type
- Location/Company's name
- Buyer/Dealer/Distributor/Vendor/Service provider info, if available

# INFORMATION

**FOR AUTHORIZED DEALERS - TERMS** are net 30, with approved credit.  
Products are shipped FOB Smithville, Tennessee.

**RETURNS** - Return Material Authorization (RMA) requests must be submitted within **60 days from date of invoice**. Prior authorization must be received in order to return merchandise. Approved returned goods must be returned prepaid. In all cases, Star Brands will refuse any returned goods that do not have prior Star Brands approval and therefore, do not bear a Star Brands Return Material Authorization (RMA) number. Goods must be returned either in the original Star Brands unopened box or returned unused and repacked in the original Star Brands box using original Star Brands packing materials. Credit will be issued for returned product less restock. Returns are subject to a 35% restocking charge. All authorized returns will be paid by credit memo. Refurbishing, if necessary, will be an additional charge and will be deducted from any credit that may be allowed. Items not stocked, specially configured or built to order do not qualify for return. Any specials that are authorized for return, may be subject for a fee beyond the standard restocking fee. Returns must be received at the assigned return address within thirty (30) days from authorization date. Goods returned after this period may be refused. Star-Holman-Toastmaster reserves the right to refuse or charge a 45% restocking fee on equipment returned without prior authorization.

**CANCELLATIONS-** Please note that cancellations made less than two weeks before the scheduled shipping date are subject to a 50% charge of the total unit(s) value. This policy helps us manage our inventory and production schedules effectively. We appreciate your understanding and cooperation.

**TITLE** passes to the consignee when merchandise is accepted by the carrier, and thereafter travels at the risk of the purchaser. FOB Factory.

**SUBSTITUTIONS** in material or design will be made as needed, and may be done without notification when necessary.

**PLEASE SPECIFY** (a) finish, (b) type of gas, (c) BTU content, (d) altitude (where applicable), or (e) voltage, (f) phase and (g) cycle when ordering.

**PRICES** Please contact the factory or one of its export agents for quotations on merchandise to be shipped into other areas. All prices are in U.S. dollars. All prices are subject to change without prior notice.

**START UP** This is the initial uncrating and set up of the equipment which is not covered under the Star warranty. This will include piping, electrical and gas connections. This also includes the first "turn on and check" of any gas or electric equipment.

**Star**  
265 Hobson Street  
Smithville, Tennessee 37166

**CUSTOMER SERVICE**

phone: 800-264-7827 option 1  
email: [orders@starholdingsgrp.com](mailto:orders@starholdingsgrp.com)

**TECHNICAL SERVICE**

phone: 800-264-7827 option 2  
email: [techservice@partstown.com](mailto:techservice@partstown.com)





**Griddles • Charbroilers • Hot Plates**  
**Fryers • Panini/Sandwich 2-Sided Grills**  
**Contact & Conveyor Toasters • Conveyor Ovens**  
**Tortilla Warmers • Drawer Warmers • Roller Grills**  
**Hot Dog & Concession Equipment • Waffle Makers**  
**Heated Peristaltic Dispensers**

## **STAR, HOLMAN & TOASTMASTER**

265 Hobson Street | Smithville, Tennessee 37166

### **CUSTOMER SERVICE**

phone: 800-264-7827 option 1  
email: [orders@starholdingsgrp.com](mailto:orders@starholdingsgrp.com)

### **TECHNICAL SERVICE**

phone: 800-264-7827 option 2  
email: [techservice@partstown.com](mailto:techservice@partstown.com)

PRICING SUBJECT TO CHANGE. ALWAYS CHECK AUTOQUOTES FOR LATEST PRICING PRIOR TO PLACING AN ORDER.  
ALL ORDERS SHIP FOB FACTORY (SMITHVILLE, TN)

THANK YOU FOR YOUR BUSINESS.

- *Star Holdings Group Team*  
SMITHVILLE, TN